

Lady Lumley's School
Prospectus





Welcome to Lady Lumley's School

One of North Yorkshire's highest performing secondary schools

Dear Parents & Carers

Choosing your child's secondary school is an exciting and important milestone for your family. At Lady Lumley's School, we are delighted to offer you all the benefits of a first class 11-18 education.

With a legacy that stretches back through the centuries, Lady Lumley's is a community school that values tradition and embraces an exciting future for the next generation.

Lady Lumley's School is one of 6 schools in the local area that make up part of the Coast and Vale Learning Trust, and we are excited about the opportunities that will be provided through the new partnership with our friends at Delta Academy Trust.

Provisional county data shows that students at Lady Lumley's School achieve well above those in other schools in the county.

It is exceptional that 78% of students passed English and mathematics and 62% at the higher grade, one of North Yorkshire's highest performance for both measures in the Summer of 2024. To put this in perspective, the GCSE data for the county for 23/24 shows 46% of students secure English and mathematics combined at Grade 5+. At Lady Lumley's School 62% of students achieved this measure in the Summer of 2024.

Our A' Level students excelled this year and have progressed to destinations locally and across the nation as firefighters, sports psychologists, neuroscientists and chemists to name but a few!

You are not just joining an exceptional school, you'll be taking up a place in a Trust that is determined to broaden horizons and create opportunities and experiences for your child, similar to those provided by private education, but without the fees.

The Lady Lumley's School experience includes:

- Exceptional Duke of Edinburgh Award Scheme enhanced by an opportunity to attend a residential in the Lake District National Park at the Delta Trust's Outdoor Education Centre at Patterdale on Ullswater;
- The opportunity to continue your study to A Level and Level 3 BTEC and the pathway to University and Higher Level Apprenticeships;
- Access to a variety of educational visits in the UK and abroad;
- Access to sports facilities and participation in town, county and trust wide events;
- Recognition and celebration of students beautiful work, attitude and engagement;
- Fully resourced and funded curriculum resources, including knowledge organisers and bespoke revision guides, as well as access to exceptional online study packages.

Lady Lumley's School is an exceptional school, led by highly qualified staff, who prioritise every student's academic achievements and personal development to ensure they have the very best start in life.

Given this year's outstanding results, we anticipate high demand for places. To secure your place register your preference through North Yorkshire admissions.

We look forward to working with you as partners; come and join us and secure a great future for your child.



Clair Foden
Headteacher



Paul Tarn
CEO

Uniform

At Lady Lumley's School we believe children should dress for success.

Your child will need a school uniform including:

- **Green jumper with Lady Lumley's logo**
- **Lady Lumley's clip on tie**
- **White shirt**
- **Black trousers / black pleated skirt**
- **Plain black flat polishable shoes**

PE Kit:

- **Black polo with Lady Lumley's logo**
- **Black shorts / skort / leggings**
- **Green rugby shirt or black games jumper with Lady Lumley's logo**
- **Long black socks**
- **Training shoes and football boots**



School uniform can be purchased from:

Rumours
17 Victoria Road,
Scarborough YO11 1SB.

We also have a small
Pre-Loved Uniform shop
on site at no cost or for a
small donation.



Sixth Form

At Lady Lumley's Sixth Form students thrive in an atmosphere of supportive ambition. Fostering a collective ethos between students and staff, "being our best" is the mantra that really underpins life at Key Stage 5. Being a community school, the sixth form provides a bespoke extension to student's education, a place where warm relationships are formed and the 'whole' student is developed academically and personally.



A broad curriculum offers choice and suitable pathways beyond sixth form. High quality teaching and learning is aided by smaller class sizes for a more personalised learning experience. Students' broader development is harnessed by daily tutoring and weekly 'life' lessons; preparing well for students to contribute brilliantly to the world of tomorrow. We also work hard together to develop students' academic habits. Our sixth form runs on a belief that students immediately after GCSEs need support in bridging the gap to a higher level of learning. Independent study strategies are taught explicitly to help students become effective learners outside of the classroom, as well as in.



Positioned near the glorious North York Moors, weekly enrichment includes the Gold Duke of Edinburgh Award, culminating with a trip to Buckingham Palace! Sport, art, debating, online learning courses, TED talks, essay competitions and wider reading are just some of the many activities students undertake. To accompany this, the Aspire Group focuses on higher level critical thinking, helping students prepare for research-led universities and higher-level degree apprenticeships. Student leadership is developed through multiple avenues, including whole-school Headteacher's Ambassador positions; mentoring younger students, helping the lower school tutor read programme and running the sixth form committee. The EPQ project offers students a chance to further boost their qualifications portfolio by half an A' Level with an independent project on a topic of their choice, brilliantly developing research and project management skills along the way.

Sixth Form

A sixth form that has academic excellence, personal development and student wellbeing at its core

Sharing resources

Our subject specialists develop Key Stage 3 knowledge organisers packed with subject-specific information and active learning tasks for students to complete at home.

With QR codes and links to online resources, including 'Sparx Maths', 'Sparx Science' and 'Linguascope', students' learning extends beyond the classroom and it's all completely FREE.

Common assessments are written by our specialists, and we work in collaboration with Delta to compare results from across the Trust, meaning we are able to really focus on areas where we identify our students may need more support.

Subject specialists (including qualified examiners) develop GCSE revision guides for many subjects, providing personalised learning and detailed course based content when it really counts.



Working with you

As partners in your child's educational journey, we use outstanding data comparison technology to provide you with regular updates on your child's progress:

We use Common Assessments

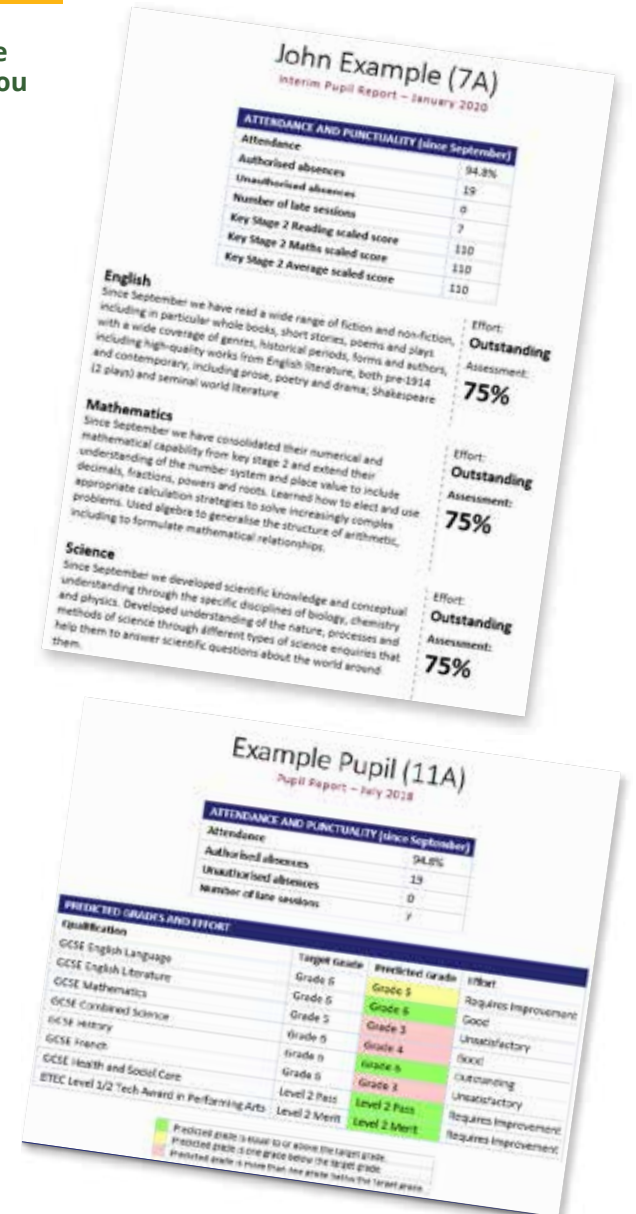
- Students in Year 7 to Year 9 across all schools, take key stage 3 assessments in English, mathematics, science, geography, history, modern foreign languages, and computing twice a year.
- These assessments are designed by in-house subject experts such as linguists, authors, physicists and mathematicians that test the knowledge, skills and understanding students have acquired and retained in their learning since the beginning of the academic year.
- Students receive their marked assessments along with a record of their strengths and weaknesses, and they can download mark schemes to identify their own areas for improvement. These mark schemes are also available to you, allowing you to review them and gain a clear understanding of your child's progress.

Regular reporting to partners

You, as partners, receive a student report twice a year (January and July) that provides an overview of performance in key stage 3 assessments, predicted grades and target grades in key stage 4 and an effort grade in all subjects.

Reports are available online through the Parent App and provide information on:

- Each assessment (December and June) completed by students up to that point in the academic year
- The progress of your child in line with expectations.



English

curriculum

76% of students achieved
Grade 5 or above in English

An Engaging Curriculum

From Year 7, students will be building on the foundations of the primary curriculum through a systematic exposure to a wide range of high-quality literature. We not only promote reading for enjoyment to ignite a curiosity in students, but also as a way of acquiring knowledge and exploring the world in ways that develop a student's cultural and emotional intellect. Our Secondary Reading Strategy recognises the barriers students face in accessing challenging texts such as: complexity of narrator, non-linear time sequences, complexity of story or archaic texts and encourages students to confidently explore and probe the literal and layered meanings in the texts they read. Through our curriculum we actively encourage students to develop their close reading skills so they can confidently and methodically break down the language and structure of a complex passage to establish and analyse meaning.

Competitions and Events

Students in Years 7 and 8 can participate in annual poetry events. These events often feature guest authors and special visitors, providing inspiration and a chance to meet literary heroes. Aspiring young writers can test their skills in national writing competitions, offering a platform to showcase talent and potentially gain recognition on a national scale. In addition we also have regular author visits to our library.

Reading Through the Curriculum

As our students progress through the English curriculum, they are continually developing their close reading skills through exposure to increasingly challenging fiction and non-fiction, which include works by 19th, 20th and 21st century writers. We want our students to be able to engage with a range of texts with confidence and to develop their skills in decoding difficult texts, gathering carefully selected evidence, evaluating texts in detail and possessing the ability to explore multiple texts simultaneously to formulate and articulate personal viewpoints.



70% of students achieved
Grade 5 or above in maths

Mathematics

curriculum

Mathematical Skills

Our mathematics curriculum creates mathematically literate citizens with the knowledge to succeed in life. Students learn to be resilient, to be efficient and to persevere. Students become equipped with the essential skills to understand the world around them, with mathematical skills for future learning and employment. They develop critical thinking through problem-solving activities that encourage exploration and embrace 'wrong turns' as valuable learning steps. We believe everyone can excel in mathematics.

Our curriculum seamlessly progresses from Key Stage 2, building a strong foundation for further education and future careers. We utilise the 'Sparx' online platform to solidify learning and propel students towards mastery. High-performing students can even pursue the further mathematics GCSE qualification. Lady Lumley's School excels in mathematics so much that we offer three different A Levels in Key Stage 5; A Level mathematics, A Level further mathematics and Level 3 core mathematics in context. Many of our students go on to study mathematics, or mathematics related degrees at university.

Enrichment Events

Each year we enter students across all year groups for the UK Maths Trust individual challenges. In the lead up to the competitions the maths department run after school support sessions to help our students prepare for the challenges. We take part in the UKMT team challenges across KS3, 4 and 5 and compete against other local schools. We work closely with the Advanced Maths Support Programme and have enjoyed taking some of our students to events led by them. We also run a weekly Chess Club for our students.



Sparx Maths: *effective for all students*

2024 Best Results Ever!

Lady Lumley's School

23/24 County Average

62%

of students at Lady Lumley's School achieved Grade 5+ pass rate in English and maths

46%

of students across the County achieved Grade 5+ pass rate in English and maths

Lady Lumley's School has one of the highest provisional Grade 5+ pass rate in English & mathematics in North Yorkshire with a **62% pass rate**.

Lady Lumley's school has one of the highest provisional Grade 4+ pass rate in English & mathematics in North Yorkshire with a **78% pass rate**.

Lady Lumley's School is **16%** above the North Yorkshire average for Grade 5+ pass rate in English & maths

Lady Lumley's School is **11%** above the North Yorkshire average for Grade 4+ pass rate in English & maths

Science *curriculum*

78% of students achieved Grade 4/4 or above in combined science compared to 57% nationally

55% of students achieved Grade 5/5 or above in combined science compared to 36% nationally

A Roadmap to Success

Our meticulously planned curriculum adheres to the national curriculum for Key Stage 3 and seamlessly aligns with our GCSE specifications. Our ambitious curriculum ensures our students have successful progression through their A Level biology, chemistry and physics courses.

Unleashing Inner Scientists

We celebrate science throughout the year with exciting themed events like "Space Week", "Brain Day" and "World Bee Day." These wider curriculum lessons spark curiosity and broaden scientific horizons. Students also participate in our termly science competitions.

Nurturing Future STEM Leaders

We offer an after-school STEM club, featuring activities around science, technology, engineering, and mathematics. Year 9 students can also get involved in Lego Robotics, participating in both regional and national competitions.

Mavericks

High-achieving students in Years 9, 10, and 11 may be selected for the prestigious "Science Mavericks" event. Collaborate with other Coast and Vale and Delta students from other academies to tackle real-world scientific challenges, exploring topics like the future of earth and the possibility of terraforming celestial bodies.

Sparx Science: building scientific knowledge and understanding through personalised homework



French & German

curriculum

Your Bridge to a World of Opportunity

We believe every student should have an opportunity to develop their awareness of the wider world through language learning. We want to develop students who are resilient, confident and independent learners of French or German.

Throughout the language learning journey there is a strong teaching and learning focus on communication and grammatical knowledge. Students should be able to understand and use the perfect, present and immediate future tense by the end of KS3. Lessons focus on a variety of activities which promote understanding through listening and reading tasks and which encourage practical communication in speaking and writing. Speaking skills are supported through a focus on phonics, to help students pronounce sounds with more confidence.



Cultural awareness is a key theme in each module and students learn to appreciate and compare life here with life in French or German speaking countries. We also have access to a computer suite and the department subscribes to various websites which enable students to consolidate their learning in the classroom with a variety of fun, yet challenging activities. Students are expected to learn key, high frequency vocabulary and phrases on a regular basis to improve their knowledge and literacy skills.



The Arts

curriculum

Art and Photography

Igniting Creativity

Everyone is an artist.

Art at Lady Lumley's celebrates creativity. We build upon the critical skills of observation and research, broadening and refining responses. Emphasis is placed on trying and failing as an integral part of the creative process.

Links with artists and craftspeople as well as planning and making, are essential. Trips to the Yorkshire Sculpture Park, the Liverpool Biennial and Paris, broaden horizons and expand perspectives.

Lady Lumley's robust and successful GCSE and A level art and photography courses develop inquisitive thinkers who can express original ideas in a multiplicity of ways. Our students excel in their examination results.

Our bespoke art spaces include a 6th form studio space, IT suite and spacious, designated classrooms to enable students to work with a wide range of media.

Our art curriculum focuses on honing drawing, painting, mixed media and photography techniques alongside challenging students to think, observe and question: to see new possibilities.



Music and Drama

Music

Music is more than just notes on a page. It's a vibrant and exciting journey of exploration, performance, creativity and personal growth. Music fosters social connections, enriches lives and provides an important outlet for happiness and joy. Music lessons offer a foundation for lifelong participation in the myriad wonderful music opportunities available throughout life, regardless of music or non-music career choice.

The music curriculum is hands-on, practical and progressive. Skills learnt in Year 7 are still essential in Year 13! Pupils create, perform, practise, devise and actively listen in a large variety of styles and genres widening cultural understanding. This is complemented by high quality performance opportunities with ensembles such as the well-established department 'Midnight Fusion Jazz Band' and Voce Choir. Pupils can also form their own ensembles and book department facilities to rehearse. The Music Hub also offers lessons in school on more than 10 different instruments and voice. Our partnership with Leeds Conservatoire Music Futures and Music Mark offers pupils wider participation opportunities in world-class facilities.

curriculum

Drama

Drama at Lady Lumley's is about:

Performance; specifically live performance. We are theatre-makers, we tell stories and entertain. We explore the world around us by stepping into the shoes of others and looking at things from a new angle. We take inspiration from life; from plays, pictures, music, poetry and the issues we encounter every day.

Working with others; we rehearse, we listen, we share. We take collective responsibility for our work and encourage everyone to take part and contribute. Together we can be great.

Acting; we develop skills to transform ourselves in order to engage our audiences. We are artists, creating emotion and transforming the space we are in.

Life; it's about our own lives, past, present and future. It's about the lives of others. It's about the ability for a piece of theatre, a story, or even a warm-up to move us and give us a live experience shared with others.

Education is more than Academic Achievement



Sport

curriculum



Whether you plan on becoming an elite athlete or simply enjoy staying active, we have something for you!

Our PE curriculum aims to inspire students to become physically confident and build resilience so that each student is equipped to lead a healthy, active lifestyle.

Lady Lumley's School boasts excellent sporting facilities such as a large indoor sports hall, indoor climbing wall, gym, fitness suite, floodlit astro turf, floodlit netball courts, floodlit tennis courts and a large multi-purpose sports field.

Examples of the activities we offer include team sports such as cricket, football, handball, hockey, lacrosse, netball, rounders, rugby and volleyball. We also offer a range of individual activities such as athletics, badminton, climbing, dance, fitness, gymnastics, table tennis and tennis. Furthermore, we can now utilise Delta Trust Outdoor Centres in the Lake District and North Yorkshire. At these centres students can choose to take part in mountain biking, canoeing, rock climbing, hill walking and abseiling.

We encourage all students to engage in the PE enrichment programme, providing students with the opportunities to be competitive in sport both in and out of lessons. Students can attend weekly training sessions and represent the school in one of the many teams which are available, helping them build on key characteristics which are physical, social and emotional.

Students have the opportunity to work alongside the School Games Organiser as sports leaders, where they can develop leadership skills by organising and officiating events, such as primary school festivals.

There is no surprise that our students go on to achieve outstanding results at both GCSE and Sixth Form Level. Many go on to have successful careers in sports and leisure industries.

Geography

Humanities

curriculum

Explore, Analyse, and Understand Our World

Our geography curriculum is designed to ignite curiosity and wonder about the world around you.

Students explore both human and physical aspects of geography, examining themes like sustainability, development, globalisation, and climate change. Cartographic, graphical, ICT and GIS skills will make students proficient in analysing geographical data.

Apply knowledge in real-world settings through exciting fieldwork trips. These immersive experiences range from local investigations to residential adventures like the Patterdale trip. During this trip, students conduct a river study in Mungrisdale, explore flood management strategies in Keswick, visit Aira Force waterfall, and even embark on a scenic cruise of Lake Windermere, England's longest lake. The journey culminates in a challenging climb up Orrest Head, with spectacular views.

Other exciting trips and fieldwork include:

- Year 7 students participating in infiltration investigations
- Year 8 tackling micro-climate investigations
- Year 9 embarking on a river trip
- Year 10 and 11 completing coastal management enquiries in Hornsea, exploring housing quality
- Year 12 and 13 undertake coastal fieldwork looking at a clone town at Northallerton. They also visit the Lake District for geographical enquiries into the water and carbon cycle.



History

Humanities

curriculum

Our history curriculum empowers students to think critically about the world they live in. Here's what sets us apart:

Questioning the Past: We encourage students to analyse historical events and perspectives, fostering independent thinking beyond 'received wisdom'. Don't just accept information at face value – learn to question and examine evidence.

Global Context: Move beyond a solely British perspective. Students explore a variety of cultures and historical events on a local, national, and international scale, from Ancient times to the Modern era. This global awareness is crucial for understanding the interconnectedness of our world.

Building Historical Worlds: Immerse yourself in different historical periods through engaging activities like "building worlds" in your mind. Historical fiction becomes a springboard for exploration, igniting curiosity and sparking questions about the past.

Diverse Voices: Encounter a range of historical figures and perspectives, gaining a well-rounded understanding of the past. Learn about the world from the viewpoints of people from all walks of life.





The Duke of Edinburgh's Award

We are proud to champion the transformative power of the Duke of Edinburgh's Award (DofE). This prestigious programme equips young people across our academies with essential skills and experiences that set them up for success in all aspects of life.

The DofE programme goes beyond traditional education, fostering a holistic development that benefits students in numerous ways:

- Learning new skills ignites passions and talents.
- Regular physical activity fosters a healthy lifestyle.
- Volunteering builds responsibility and community spirit.
- Overcoming challenges builds resilience and confidence.
- Teamwork and leadership skills develop through expeditions.
- The DofE Award is recognised by universities and employers.
- Strong social skills and lasting friendships are fostered.
- DofE activities enhance mental well-being and cultural awareness.

There are three sections to complete at Bronze, Silver and Gold levels.

They involve helping the community/environment, becoming fitter and healthier, developing new skills, planning, training for and completing an expedition and, for Gold only, working with a team on a residential activity.

Achieving an award isn't a competition or about being first, it's about setting personal challenges and pushing personal boundaries.



Outdoor Enrichment

Unforgettable Outdoor Learning

Our thriving Outdoor Education department offers students unique opportunities to challenge themselves, develop new skills, and build resilience through hands-on experiences in the great outdoors. With a team of specialist, qualified instructors, we provide a wide range of activities using our extensive equipment, including canoes, kayaks, mountain bikes, expedition gear and our very own climbing wall. We believe all students should have access to high quality learning beyond the classroom and make our activities as accessible as possible.

Accessible Outdoor Education and Opportunity

Our weekly Outdoor Education Club allows students to participate in different activities each week. From canoeing to mountain biking and climbing, students have the chance to try something new, build confidence, and develop teamwork skills in a fun and supportive environment. We aim to include as many students as possible. This includes offering all Year 9 students an unforgettable winter residential at Peat Rigg Outdoor Centre, helping them to build resilience and leadership skills.

Removing Barriers to Learning

We understand that financial constraints shouldn't hinder educational opportunities. That's why the Trust provides financial support to students who may struggle to access these experiences. We are also fortunate to work with the local charity the Lady Lumley's Educational Foundation who support families with financial hardship to access educational visits.





Patterdale

outdoor enrichment

Expanding Horizons

As part of our partnership work with Delta Trust, we will now have access to an Outdoor Education Centre in the Lake District National Park. This exciting addition provides students with even greater opportunities for transformative outdoor learning experiences.

A Landscape of Adventure

Nestled amidst breathtaking scenery, Patterdale offers a unique opportunity for students to delve deeper into adventurous activities. Imagine scaling iconic peaks like Helvellyn via Striding Edge, exploring the shores of Ullswater, or encountering diverse wildlife in the centre's four-acre haven, complete with a river, wetlands, and rare birds. Patterdale is designed to ignite a passion for the outdoors and inspire a sense of adventure in every student.

To maximise learning opportunities, there are plans to construct a permanent observatory at Patterdale, harnessing the wonders of the night sky.

Memorable Experiences, Lifelong Impact

Patterdale promises unforgettable experiences that will leave a lasting impact. Students return with stories of personal growth, new-found confidence, and a deeper connection with the natural world. We are committed to fostering these transformative experiences for all our students.



Cyber North

digital defence

This immersive annual event, co-organised by Delta and Northern Education Trust, is designed to introduce students to the ever-growing field of cyber security.

Why Cyber Security Matters

In today's digital age, where everyone relies on computers and the internet, cyber security is more important than ever. Cyber North equips students with the knowledge and skills to protect themselves from online threats like identity theft, financial fraud and more.

Engaging Activities and Friendly Competition

The event features a variety of engaging activities that put students' problem-solving skills to the test. They are reimagined as digital detectives, cracking codes, analysing evidence and bringing cyber criminals to justice. There's even a healthy dose of friendly competition between participating schools, making the experience more exciting.

Building a Brighter Future

Cyber North goes beyond just raising awareness. It empowers students to take control of their digital safety and explore potential careers in the booming cyber security field. By participating in this event, students gain valuable insights into this critical field and discover if a cyber security career path might be the perfect fit.



Careers Education

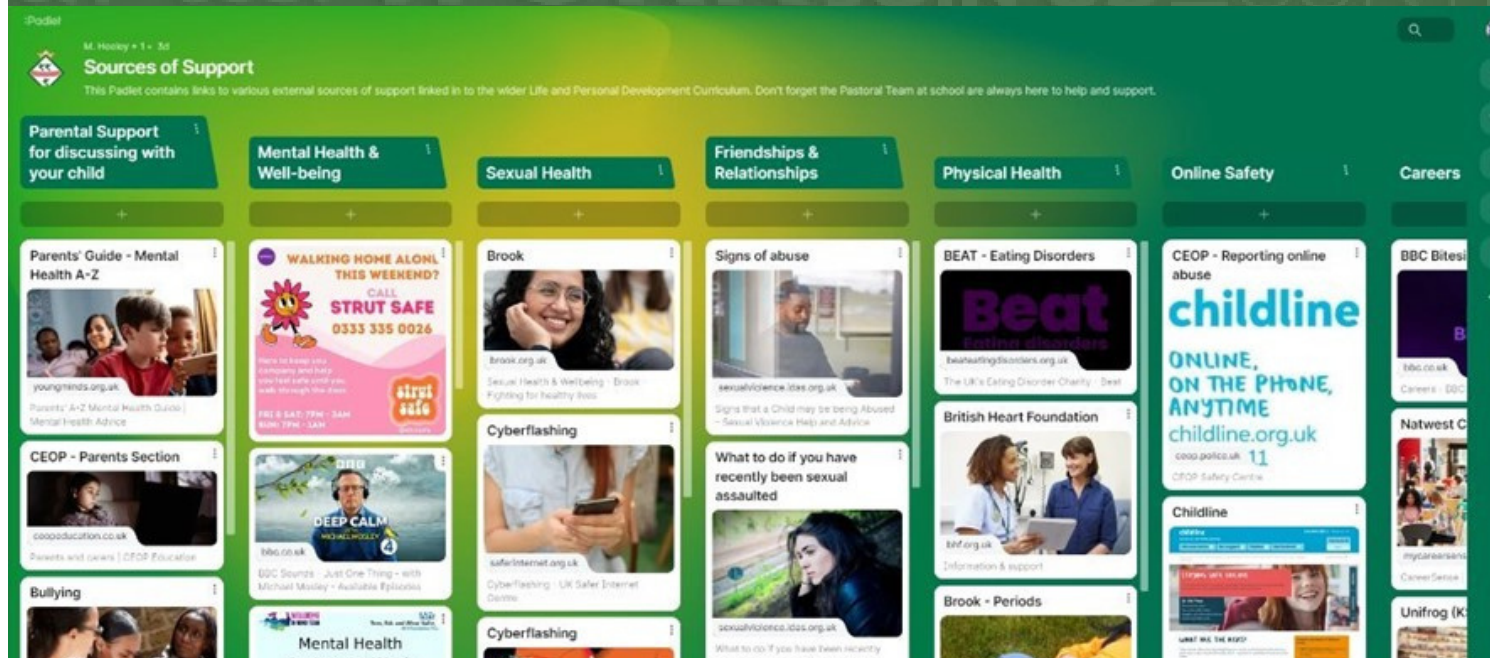
Quality career support

At Lady Lumley's we believe that it is essential that our students are guided in their planning for the next steps in their careers and lives. Through our tutor time programme, personal development lessons, assemblies and enrichment Wednesday, students receive a broad range of career sessions. Staff expertise is utilised, as are external suppliers to help students develop a broad understanding of life beyond school. Our careers advisor provides one-to-one guidance.

Work experience is enjoyed throughout Sixth Form life with students exploring opportunities to further their understanding of the workplace. In the summer of Year 12, students will once again be enjoying a week-long placement that helps them to explore possible career pathways.

Throughout the two years in sixth form our aim is to help students to develop an understanding of the world of work. To explore the qualities needed to go on from us and make informed decisions about their pathway ahead. We seek to offer them a personalised journey of guidance that can help to build their understanding and competence to go and develop the career that they desire. Our delivery is underpinned by a belief that students need a broad and aspirational range of career options, so that they can go on and be part of a generation in our society that helps Britain to be the best country that it can be.

Our students would greatly benefit from hearing from our alumni. They already enjoy hearing from and reading about the career highlights of some of our former pupils, but we would be delighted to hear from others if you would like to support us.



Enrichment

We are fortunate at Lady Lumley's to have an ever-growing enrichment timetable for our students. From Japanese to Chess Club, navigating the climbing wall or working on the school production. There are plenty of opportunities for students to get involved in a range of activities.

This includes joining sports teams to represent the school or singing in the school choir. Our enrichment offer develops the leadership skills of our students, through our Sports Leaders Programme, Senior Student Leadership, House Leadership and various team building events throughout the year in school and residential.



Personal Development

Personal Development is delivered throughout our life curriculum, Futures and leadership lessons, tutor time and assemblies. They complement one another to support students throughout their learning journey at Lady Lumley's. The school's core values are at the heart of the Personal Development Curriculum to encourage all students to be the very best they can be.



PSHE

The Personal, Social, Health and Economic Education (PSHE) programme plays a fundamental part in the development of the students at Lady Lumley's School and underpins the ethos of the school. The programme enables our students to acquire the knowledge, understanding and skills they need to manage their lives and empower them to become a valuable member of society and therefore enhancing their life chances.

The PSHE programme contributes significantly to our students' development and helps to promote the key attributes needed to live and work in a diverse society. The majority of the programme is taught through discrete, timetabled lessons known as Life. The life curriculum is taught by a dedicated team who are up-to-date with current issues affecting young people, allowing them to connect the learning in the classroom to its wider purpose: preparing our young people for the real world.

Tutor time, assemblies and external providers are used to support the wider PSHE curriculum across school. Each member of staff at Lady Lumley's School is aware of the significant role that PSHE can play in the development of our students and therefore help to promote the content at all levels. The content is varied and responds to specific needs as they arise or are identified through surveys such as the Growing Up in North Yorkshire Survey. This allows a flexible and varied programme to be taught, whilst still meeting statutory requirements.

Religious Education is also taught throughout the school and contributes to the spiritual, moral, social and cultural education. Activities are planned for students to provide opportunities for curiosity and imagination.



Everyone is included

Lady Lumley's School is an inclusive school that provides for the full range of SEND needs: communication and interaction, cognition and learning, physical and/or sensory as well as social emotional and mental health needs.

At Lady Lumley's School we are ambitious for every child with SEND. We have high expectations and our aim is to ensure that children and young people with SEN and disabilities are given equal opportunities to thrive at school, to make good progress in their learning and to feel valued as members of the school community.

All students are equally valued, and the school has high aspirations for all. Teaching and learning will be adapted to suit the needs of learners and recognise different routes to achievement.

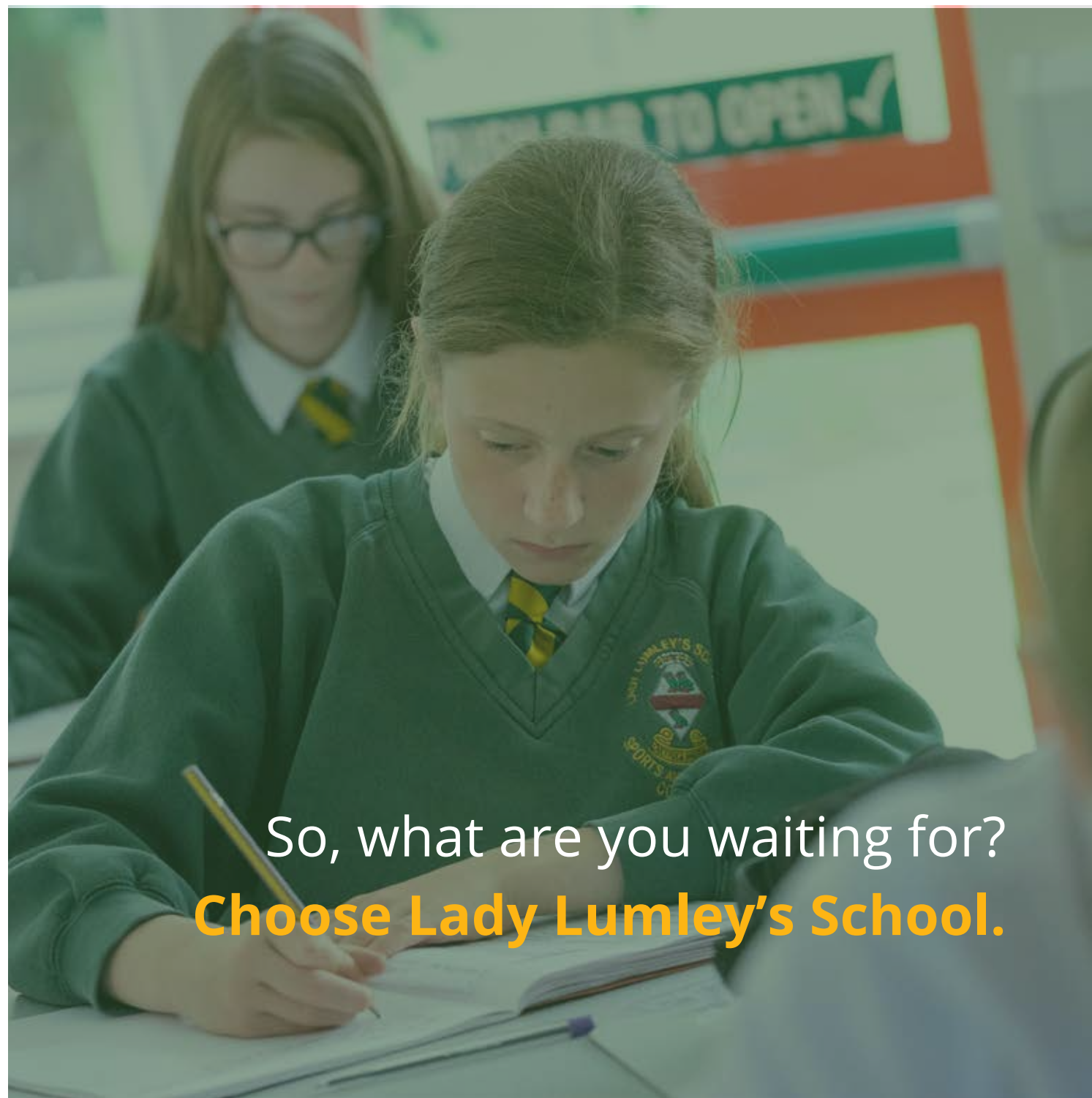
All SEND learners have an individual support plan, which identifies strategies teachers and support staff should use in order to support them to achieve their full potential. Our vision is for all students to achieve at school, make a successful transition to adulthood and to actively participate in their community.

Dedicated staff members

We have a dedicated team of support staff led by our Special Educational Needs Coordinator. Together they strive to provide the best for students with additional needs including delivering a range of bespoke interventions.

The SENCO works closely with the local primary schools and the local authority to ensure that students are effectively supported during their transition to us from our local primary schools.





So, what are you waiting for?
Choose Lady Lumley's School.





Learn more about us:

www.ladylumleys.coastandvale.academy